

Image File Editor

PowerQuest's Image File Editor simplifies management of all your image files. Working within a single screen, Image File Editor gives you total image file control: you can create and copy image files, copy or delete partitions within files, and compress and uncompress partitions. You can even restore individual files from a partition without having to restore the whole image. Image File Editor also provides you with name and comment capabilities, for easy identification of each image file and partition.

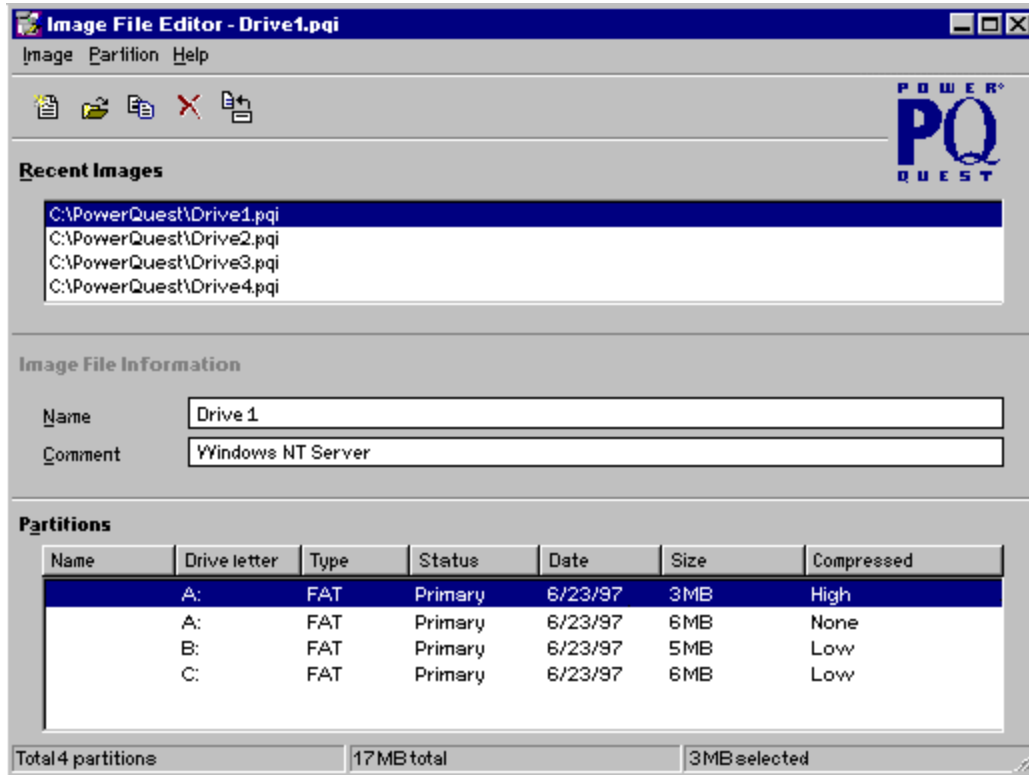
Trademarks

The entire risk of the use or the result of the use of this software and documentation remains with the user. No part of this documentation may be reproduced or transmitted in any means, electronic or mechanical, for any purpose, except as expressed in the Software License Agreement.

Copyright © 1998 PowerQuest Corporation. All rights reserved. This software and documentation are copyrighted. All other rights, including ownership of the software, are reserved to PowerQuest Corporation. This software is protected by U.S. patents 5,675,769 and 5,706,472, with other patents pending. Drive Image and Drive Image Professional incorporate LZS® compression from Hi/fn®, U.S. patents 4,701,745; 5,016,009; 5,126,739; 5,146,221; and 5,414,425. Drive Image, Drive Image Professional, DriveCopy, PartitionMagic, PowerQuest, the PowerQuest mark, MagicMover, SmartSector, ImageShield, and DriveMapper are trademarks or registered trademarks of PowerQuest Corporation.

DOS, Microsoft, Windows, Windows NT, and Windows 95 are trademarks or registered trademarks of Microsoft Corporation. NetWare is a registered trademark of Novell. Disk Manager is a trademark of OnTrack Corporation. EZ-Drive is a trademark of MicroHouse International. OpenDos is a trademark of Caldera, Inc. Norton Utilities and AntiVirus are trademarks of Symantec Corporation. Boot Manager is a trademark of International Business Machines Corporation. Jaz and Zip are registered trademarks of Iomega Corporation. Intel is a registered trademark of Intel Corporation. All other brand and product names are trademarks or registered trademarks of their respective owners.

Click on any item in the screen below for help on that item.



For help on specific tasks, see the [How Do I...](#) section.

Recent Images

Lists the PowerQuest image files most recently accessed. Click any filename in this list to view the corresponding image file and partition information.

The **Recent Images** list holds up to 16 filenames. Additional filenames bump the oldest items from the list. To remove a single image filename from the list, select **Image / Recent Images / Remove Entry** from the menu bar. To clear this list, select **Image / Recent Images / Clear List**.

Image File Information

Name displays a user-assigned name for the selected image file. You may specify a name by typing directly in the **Name** field, or by selecting **Image / Name** from the menu bar. If no name is assigned, this field remains blank.

Comment displays a user-assigned comment associated with the selected image file. You may specify a comment by typing directly in the **Comment** field, or by selecting **Image / Comment** from the menu bar. If no comment is assigned, this field remains blank.

Partitions

Displays the partitions in the selected image file.

Name identifies a user-assigned name for the selected partition. You may specify a name by selecting **Partition / Name** from the menu bar. If no name is assigned, this field remains blank.

Drive Letter identifies the drive letter associated with the selected partition.

Type specifies the file system type (e.g. FAT, NTFS, HPFS, etc.) in the selected partition.

Status identifies the selected partition's drive status, either **Primary** or **Logical**.

Date identifies the date the selected partition's image file was created.

Size specifies the selected partition's file size.

Compressed identifies whether the selected partition is compressed or uncompressed. If the partition is compressed, the level of compression (**Low** or **High**) is also specified.

*Note: **Low** identifies an approximate 40% compression rate. **High** yields 50% compression, but requires significantly more processing time.*

Create New Image File

Click to create a new image file. In the **Save As** dialog, specify the new file's name and location and then click **Save**. The new file appears in the **Recent Images** list.

For more information, see [Creating New Image Files](#) .

Open Image File

Click to open a Drive Image file. The opened file appears in the **Recent Images** list and its file and partition information are displayed.

For more information, see [Opening Image Files](#) .

Copy Partition

Click to copy the selected partition. In the **Save As** dialog, you may select an existing image file or create a new image file in which to save the copied partition.

For more information, see [Copying Partitions](#) .

Delete Partition

Click to delete the selected partition from the image file.

For more information, see [Deleting Partitions](#) .

File Restore

Click to restore individual files from the selected partition.

For more information, see [Restoring Individual Files From A Partition](#) .

Total Partitions

Identifies the number of partitions in the image file.

Image Size

Identifies the total size of the image file.

Partition Size

Identifies the size of the selected partition.

Image

Select for image options.

*Note: These options may also be accessed by right-clicking on any file in the **Recent Images** list.*

New creates a new image file. In the **Save As** dialog, specify the new file's name and location and then click **Save**. The new file appears in the **Recent Images** list.

For more information, see [Creating New Image Files](#) .

Open accesses a previously created drive image file. The opened file appears in the **Recent Images** list and its file and partition information are displayed.

For more information, see [Opening Image Files](#) .

Close exits the selected image file. Although the file is closed, the filename still appears in the **Recent Images** list.

Name allows you to specify a name for the image file.

Comment allows you to specify a comment for the image file.

Span saves the selected image file across several removable media diskettes (e.g. floppies, Zip™ disks, etc.) in a spanned format.

For more information, see [Spanning Image Files](#) .

Combine converts a spanned image file into a merged (non-spanned) format.

For more information, see [Combining Spanned Image Files](#) .

Recent Images / Remove Entry removes the selected image file from the **Recent Images** list.

Recent Images / Clear List clears all filenames from the **Recent Images** list.

Exit closes the Image File Editor program.

Partition

Select for partition options.

Note: These options may also be accessed by right-clicking on any partition.

Name allows you to specify a name for the selected partition.

Comment allows you to specify a comment for the selected partition.

Copy duplicates the selected partition and saves it to an existing or new image file.

For more information, see [Copying Partitions](#) .

Delete removes the selected partition from the image file.

Compress condenses the selected partition and saves it to an existing or new image file. **Compress** also allows you to select the level of compression.

For more information, see [Compressing Partitions](#) .

Uncompress expands the selected partition and saves it to an existing or new image file.

For more information, see [Uncompressing Partitions](#) .

File Restore restores individual files from the selected partition to a specified location.

For more information, see [Restoring Individual Files From A Partition](#) .

Properties displays all the properties of the selected partition.

For more information, see [Properties Information](#) .

Help

Select for help options.

Contents provides help on Image File Editor.

Language allows you to select a desired language interface.

About displays Image File Editor product information.

Image Files

- [copy an image file?](#)
- [create a new image file?](#)
- [create a spanned image file?](#)
- [combine a spanned image file?](#)
- [delete an image file?](#)
- [open an image file?](#)
- [speed up the restore process?](#)
- [work with image file passwords?](#)

Partitions

- [access a partition's properties information?](#)
- [copy a partition?](#)
- [delete a partition?](#)
- [compress a partition?](#)
- [uncompress a partition?](#)
- [restore individual files from a partition?](#)
- [work with multiple partitions or files?](#)

Although image files cannot be directly copied within Image File Editor, file copies may be made in one of two ways. To copy an image file, follow these steps:

1. In the **Recent Images** list, click the file you wish to copy.
Note: If the file is not listed, you must first [open](#) the image file.
Note: If the image file you are copying has a password, the new file will be encrypted with the same password. See [Working With Image File Passwords](#) for more information.
The file's partition information appears in the **Partitions** group box.
2. [Shift+click](#) to select all the partitions.
3. From the menu bar, select **Partition / Copy** or click the **Copy Partition** icon.
The **Copy to Image File** dialog appears.
4. Specify a new image filename and the location in which you wish to save the copied file.
5. Click **Save**.
The following message appears: **Copy partitions to image file [*.PQI]?**
6. Click **Yes**.

The copied partitions appear in the newly-created image file.

Or, you may follow these steps:

1. From the menu bar, select **Image / New** or click the **Create New Image** icon.
*Note: You may also right-click inside the **Recent Images** list and select **New** from the quick menu.*
The **New Image File** dialog appears.
2. Specify a new image filename and the location in which you wish to save the copied file.
3. Click **Save**.
The new filename appears in the **Recent Images** list.
4. In the **Recent Images** list, click the file you wish to copy.
Note: If the file is not listed, you must first [open](#) the image file.
Note: If the image file you are copying has a password, the new file will be encrypted with the same password. See [Working With Image File Passwords](#) for more information.
The file's partition information appears in the **Partitions** group box.
5. [Shift+click](#) to select all the partitions.
6. Drag-and-drop the partitions to the newly-created filename in the **Recent Images** list.
The following message appears: **Copy partitions to image file [*.PQI]?**
7. Click **Yes**.

The copied partitions appear in the newly-created image file.

Note: Image files may also be copied using Microsoft's Windows Explorer utility.

Image File Editor allows you to create empty image files, which may then be customized by copying desired partitions from other files. To create a new image file, follow these steps:

1. From the menu bar, select **Image / New** or click the **Create New Image** icon.
*Note: You may also right-click inside the **Recent Images** list and select **New** from the quick menu.*
The **New Image File** dialog appears.
2. Navigate to the folder in which you wish to create the image file.
3. Specify a new image filename.
4. Click **Save**.

The new filename appears in the **Recent Images** list.

Image File Editor allows you to save an image file across several removable media diskettes (e.g. floppies, Zip™ disks, etc.) in a spanned format. To span an image file, follow these steps:

1. In the **Recent Images** list, click the file you wish to span.
Note: If the file is not listed, you must first [open](#) the image file.
2. From the menu bar, select **Image / Span**.
*Note: You may also right-click the image file and select **Span** from the quick menu.*
The **Create Spanned Image** dialog appears.
3. Navigate to the location in which you wish to save the spanned image.
Note: You must have at least 100 KB free on the destination drive.
4. Specify the spanned image filename.
5. Click **Save**.

Image File Editor creates the spanned image file, prompting you for each new diskette. Diskettes should be numbered to avoid confusion; when restoring a spanned image file, the diskettes must be inserted in the proper order.

Note: Image files may span a maximum of 50 diskettes.

Note: Spanned image files cannot contain more than 12 partitions.

Image File Editor allows you to recombine a spanned image file into a single, unified file. To combine a spanned image file, follow these steps:

1. In the **Recent Images** list, click the file you wish to combine.
Note: If the file is not listed, you must first [open](#) the image file.
2. From the menu bar, select **Image / Combine**.
*Note: You may also right-click the image file and select **Combine** from the quick menu.*
The **Combine Spanned Image** dialog appears.
3. Navigate to the location in which you wish to save the combined image.
4. Specify the combined image filename.
5. Click **Save**.

The image file is combined and saved under the specified filename.

To open a new image file, follow these steps:

1. From the menu bar, select **Image / Open** or click the **Open Image File** icon.
*Note: You may also right-click inside the **Recent Images** list and select **Open** from the quick menu.*
The **Open** dialog appears.
2. Navigate to the folder where the image file is located.
3. Select the desired image file.
Note: Image File Editor can only open files created with Drive Image.
4. Click **Open**.

The filename appears in the **Recent Images** list.

When restoring image files in Drive Image, compressed partitions can slow down the process. The program must spend time uncompressing and re-compressing each partition while restoring the file. This process becomes much faster if you perform the uncompressing and re-compressing steps yourself.

To speed up the restore process, follow these steps:

1. In Image File Editor, select the image file you want to restore from the **Recent Images** list.
Note: If the file is not listed, you must first [open](#) the image file.
2. [Uncompress](#) all partitions within the image file.
Note: Uncompressed partitions will not overwrite their compressed counterparts. Ensure that the compressed and uncompressed versions of each partition are not saved in the same image file, or both versions will be restored to the destination drive. You may avoid this by creating a new image file for the uncompressed partitions, or by deleting each compressed partition after it has been uncompressed.
3. In Drive Image, restore the image file to the destination drive.
4. Once the image file is restored, use Image File Editor to [compress](#) the image file partitions.

The image file is restored to the destination drive with the desired partition compression.

Although image files cannot be directly deleted within Image File Editor, files may be deleted in one of two ways. To delete an image file, follow these steps:

1. From the menu bar, select **Image / Open** or click the **Open Image File** icon.
*Note: You may also right-click inside the **Recent Images** list and select **Open** from the quick menu.*
The **Open** dialog appears.
2. Navigate to the folder where the image file is located.
3. Select the desired image file.
4. Press the **Delete** key.
The following message appears: **Are you sure you want to send [*.PQI] to the Recycle Bin?**
5. Click **Yes**.
The image file is deleted.
6. Click **Cancel** to exit the **Open** dialog.

Or, you may follow these steps:

1. From the menu bar, select **Image / New** or click the **Create New Image** icon.
*Note: You may also right-click inside the **Recent Images** list and select **New** from the quick menu.*
The **New Image File** dialog appears.
2. Navigate to the folder where the image file is located.
3. Select the desired image file.
4. Press the **Delete** key.
The following message appears: **Are you sure you want to send [*.PQI] to the Recycle Bin?**
5. Click **Yes**.
The image file is deleted.
6. Click **Cancel** to exit the **New Image File** dialog.

Note: Image files may also be deleted using Microsoft's Windows Explorer utility.

To access a partition's properties information, follow these steps:

1. In the **Recent Images** list, click the file that contains the desired partition.
Note: If the file is not listed, you must first [open](#) the image file.
2. In the **Partitions** group box, select the desired partition.
3. From the menu bar, select **Partition / Properties**.
*Note: You may also right-click the partition and select **Properties** from the quick menu.*
The **Properties** dialog appears.
4. To exit the **Properties** dialog, click **OK**.

For more information on partition properties, see [Properties Information](#).

Name identifies a user-assigned name for the partition.

Comment specifies a user-assigned comment associated with the partition.

Drive Letter identifies the partition drive letter.

Partition Type specifies the file system type (e.g. FAT, NTFS, HPFS, etc.) of the partition.

File System Type specifies the file system type (e.g. FAT, NTFS, HPFS, etc.) of the image file in which the partition is located.

Status identifies the selected partition's drive status, either **Primary** or **Logical**.

Spanned specifies whether the selected partition is part of a spanned image file.

Compression identifies whether the selected partition is compressed or uncompressed. The level of compression (**Low** or **High**) is also specified.

*Note: **Low** identifies an approximate 40% compression rate. **High** yields 50% compression, but requires significantly more processing time.*

Password Protected specifies whether the selected partition is part of a password-protected image file.

Partition Size specifies the total size of the partition. This total includes both used and free space.

Used Space in Partition specifies the amount of used space within the partition.

Free Space in Partition specifies the amount of free or unused space within the partition.

Physical Size in Image identifies the actual size of the partition within the image file. This physical size may differ from the **Partition Size** depending upon the amount of used and free space within the partition.

You may copy single or multiple partitions between image files. Copied partitions will not overwrite any partition already in the file. Therefore, you may have several partitions with the same name, drive letter, etc. within one image file.

Note: Partitions from a password-protected image file retain that password. Such partitions cannot be copied into an image file with a different password, nor can partitions with different passwords be combined to create a new image file. See [Working With Image File Passwords](#) for more information.

To copy a partition, follow these steps:

1. In the **Recent Images** list, click the file that contains the partition(s) you wish to copy.
Note: If the file is not listed, you must first [open](#) the image file.
2. In the **Partitions** group box, [Shift+click](#) or [Ctrl+click](#) to select the desired partition(s).
3. Drag-and-drop the partition(s) to the destination file in the **Recent Images** list.
Note: If the file is not listed, you must first [open](#) the image file.
The following message appears: **Copy partition(s) to image file [*.PQI]?**
4. Click **Yes**.

The copied partition(s) appear in the image file.

Or, you may follow these steps:

1. In the **Recent Images** list, click the file that contains the partition(s) you wish to copy.
Note: If the file is not listed, you must first [open](#) the image file.
2. In the **Partitions** group box, [Shift+click](#) or [Ctrl+click](#) to select the desired partition(s).
3. From the menu bar, select **Partition / Copy** or click the **Copy Partition** icon.
*Note: You may also right-click the partition(s) and select **Copy** from the quick menu.*
The **Copy to Image File** dialog appears.
4. Navigate to the location of the image file to which you wish to copy the partition(s).
5. Select the desired image file.
6. Click **Save**.
The following message appears: **Copy partition(s) to image file [*.PQI]?**
7. Click **Yes**.

The copied partition(s) appear in the image file.

To delete single or multiple partitions, follow these steps:

1. In the **Recent Images** list, click the file that contains the partition(s) you wish to delete.
Note: If the file is not listed, you must first [open](#) the image file.
2. In the **Partitions** group box, [Shift+click](#) or [Ctrl+click](#) to select the desired partition(s).
3. From the menu bar, select **Partition / Delete** or click the **Delete Partition** icon.
*Note: You may also right-click the partition(s) and select **Delete** from the quick menu.*
The following message appears: **Delete partition(s)?**
4. Click **Yes**.

The partition(s) are deleted from the image file.

Image File Editor allows you to compress individual partitions and save them to another image file. Compressed partitions will not overwrite any partition already in the file. Therefore, you may have several partitions with the same name, drive letter, etc. within one image file.

Note: Partitions from a password-protected image file retain that password. Such partitions cannot be saved into an image file with a different password. See [Working With Image File Passwords](#) for more information.

To compress a partition, follow these steps:

1. In the **Recent Images** list, click the file that contains the partition you wish to compress.
Note: If the file is not listed, you must first [open](#) the image file.
2. In the **Partitions** group box, select the desired partition.
3. From the menu bar, select **Partition / Compress**.
*Note: You may also right-click the partition and select **Compress** from the quick menu.*
The **Compress to Image File** dialog appears.
4. Navigate to the location of the image file in which you want to save the compressed partition.
5. Select the desired image file.
6. Click **Save**.
The **Compress Partition** dialog appears.
7. Select the compression level, either **Low** or **High**.
*Note: Selecting **Low** compresses partitions approximately 40%. **High** yields a 50% compression, but requires significantly more processing time.*
8. Click **Compress**.

The compressed partition appears in the image file.

Image File Editor allows you to uncompress individual partitions and save them to another image file. Uncompressed partitions will not overwrite any partition already in the file. Therefore, you may have several partitions with the same name, drive letter, etc. within one image file.

Note: Partitions from a password-protected image file retain that password. Such partitions cannot be saved into an image file with a different password. See [Working With Image File Passwords](#) for more information.

To uncompress a partition, follow these steps:

1. In the **Recent Images** list, click the file that contains the partition you wish to uncompress.
Note: If the file is not listed, you must first [open](#) the image file.
2. In the **Partitions** group box, select the desired partition.
3. From the menu bar, select **Partition / Uncompress**.
*Note: You may also right-click the partition and select **Uncompress** from the quick menu.*
The **Uncompress to Image File** dialog appears.
4. Navigate to the location of the image file in which you want to save the uncompressed partition.
5. Select the desired image file.
6. Click **Save**.
The following message appears: **Uncompress partition to image file [*.PQI]?**
7. Click **Yes**.

The uncompressed partition appears in the image file.

Image File Editor allows you to restore individual files from a partition without having to restore the whole image file. To restore single or multiple partition files, follow these steps:

1. In the **Recent Images** list, click the image file that contains the partition file(s) you wish to restore.
Note: If the file is not listed, you must first [open](#) the image file.
Note: Partition files cannot be restored from a spanned image. Combine the spanned image before restoring partition files.
2. In the **Partitions** group box, select the desired partition.
Note: Partition files cannot be restored from a compressed partition. Uncompress the partition before restoring files.
3. From the menu bar, select **Partition / File Restore** or click the **File Restore** icon.
*Note: You may also right-click the partition and select **File Restore** from the quick menu.*
Note: If the selected partition is password protected, you will be prompted for the password.
The **File Restore** dialog appears.
4. In the file name list, [Shift+click](#) or [Ctrl+click](#) to select the file(s) you want to restore.
*Note: To limit the number of files that appear in the file name list, use the * or ? wildcard characters in the **File Name** box.*
Note: Folders cannot be restored. Instead, select all files within the folder for the restore process.
5. In the **Target Directory** box, navigate to the location in which you wish to save the restored file(s).
6. Click **Restore**.
A second dialog appears, tracking the progress of the file restore.
7. When the restore is finished, click **OK**.
8. Click **Close** to exit the **File Restore** dialog.

The partition file(s) are restored to the specified location.

When you create an image file in Drive Image, you have the option of assigning that file a password. Once assigned, the password is encrypted into the file and cannot be changed. Password-protection is an excellent means of securing your image files; however, editing protected files can be confusing. Below are some general rules for working with password-protected files:

Images

If you wish to undo or reassign a password, you must use Drive Image to restore the protected image file and then create a new image file with a different password.

Partitions

Partitions from a password-protected image file retain that password. Such partitions cannot be copied or saved into an image file with a different password, nor can partitions with different passwords be combined to create a new image file.

If you...	Result
copy a password-protected partition into an image file protected by a different password	partition will not copy into image file
copy partitions with different passwords into a non-protected image file	the image file assumes the password of the first partition copied; subsequent partitions with different passwords will not be copied
copy a password-protected partition into a non-protected image file	the image file assumes the password of the copied partition
copy a non-protected partition into a password-protected image file	the copied partition assumes the password of the image file
compress/uncompress a password-protected partition and save it into an image file protected by a different password	partition will not save into image file
compress/uncompress partitions with different passwords and save them into a non-protected image file	the image file assumes the password of the first partition saved; subsequent partitions with different passwords will not be saved
compress/uncompress a password-protected partition and save it into a non-protected image file	the image file assumes the password of the saved partition
compress/uncompress a non-protected partition and save it into a password-protected image file	the saved partition assumes the password of the image file

In some cases, you may want to copy or delete several partitions, or perhaps restore numerous files at the same time. You can select multiple partitions or files in one of the following ways:

Using the mouse

Press and hold the **Ctrl** key, then click the partitions or files you want selected. Ctrl+clicking allows you to select discontinuous partitions or files.

Click the first partition or file in a list that you wish to select. Press and hold the **Shift** key, then click the last partition or file you wish to select. Shift+clicking allows you to select contiguous partitions or files.

Using the keyboard

Press and hold the **Shift** key, then press the up or down arrows to highlight the desired partitions or files. Shift+arrows allows you to select contiguous partitions or files.

Additional Documentation

Additional help on the Drive Image and Image File Editor products can be found in the **Drive Image 2.0 User Guide**.

Contacting PowerQuest

PowerQuest is committed to providing you with comprehensive technical support. However, before contacting our support department, please check the following sources for information:

Drive Image 2.0 User Guide
Drive Image README.TXT

If you cannot find the solutions you need in the above resources, contact our technical support department. Please e-mail or fax a [problem report](#) or have the report at hand when you call. You must be a registered Drive Image user to receive technical support. PowerQuest offers free support for three months from the day we receive your registration.

Address: PowerQuest, Corp.
PO Box 1911
Orem, UT 84059-1911 USA

Voice: (801) 226-6834
Support is available Monday-Friday, 8 a.m. to 5 p.m. MST/MDT.

Fax: (801) 434-3060
Fax a copy of the [problem report](#). This service is available in the U.S. and Canada 24 hours per day, 7 days per week. We try to respond to all fax requests within 24 hours.

BBS: (801) 226-5608
Call the PowerQuest bulletin board for product information and FAQ's. The correct modem setup is N-8-1. Our BBS supports transmission speeds from 1200bps to 28.8Kbps.

E-mail: support@powerquest.com
E-mail a copy of the [problem report](#).

Web: <http://www.powerquest.com>
Find FAQ's and product information on the PowerQuest web site.

Problem Report

Company Name: _____

Your Name: _____

Your Voice Phone Number: _____

Your Fax Number: _____

Drive Image Serial Number: _____

Computer Manufacturer: _____

Computer Model and Model Number: _____

Date of Computer Manufacture: _____

Processor Type: _____

Amount of Memory (RAM): _____

Operating System / Version Number: _____

Other Hardware (include bus type—ISA, EISA, MCA, PCI, VESA—as well as hard disk model and external drives):

Memory Resident Software (include memory managers—e.g. OnTrack DiskManager or EZ-Drive—and their version numbers):

Problem Description: _____

Image Copy

Image Delete

Partition Copy

Partition Delete

Partition Compress

Partition Uncompress

Restore File

Multiple Partitions or Files

Passwords

Create File

Open File

Access Properties

Drag and Drop

Speed Up

Span Image

Combine Image

Problem Report Form

